


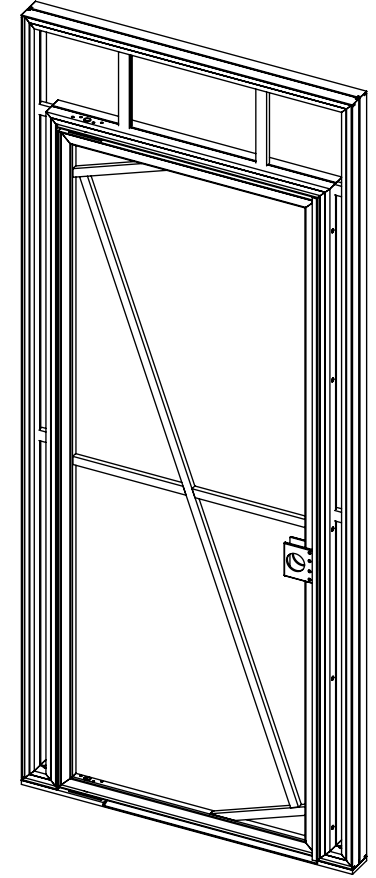
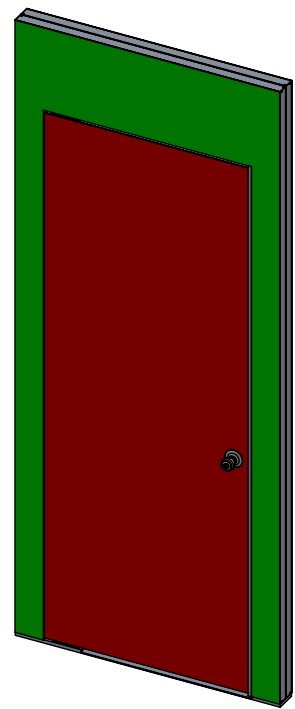
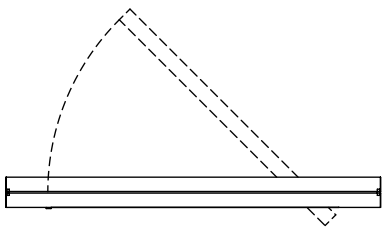
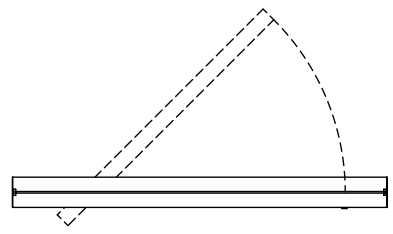
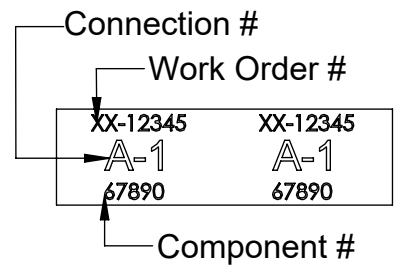
- Moss provides:
- Wrench
 - Gloves
 - Wash Cloth
 - Plastic Drop Cloth
- 

GENERAL INSTRUCTIONS:

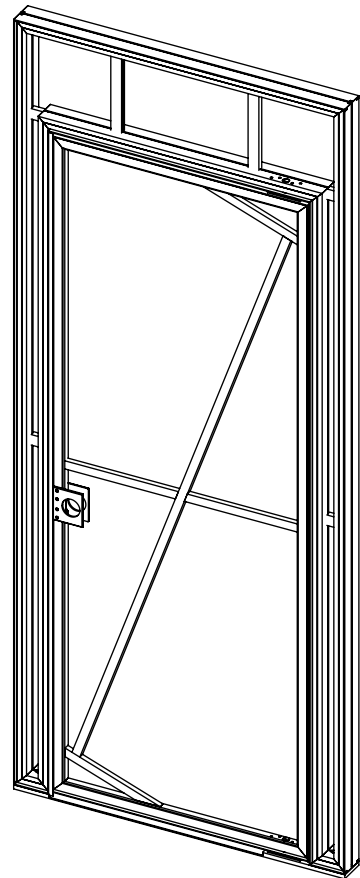
- Wipe down all tubing, clean work area and lay out plastic sheeting.
- Repack fabric neatly in the bag provided.

WORKMANSHIP GUARANTEE:
 Moss fully guarantees all products against defects in workmanship. If our products receives proper care, but fails due to a defect in manufacturing, the product will be repaired or replaced at our discretion. For damage to products caused by accidents, improper care or negligence, where Moss is not at fault (including sun degradation and wear and tear) repairs will be performed for a reasonable fee.

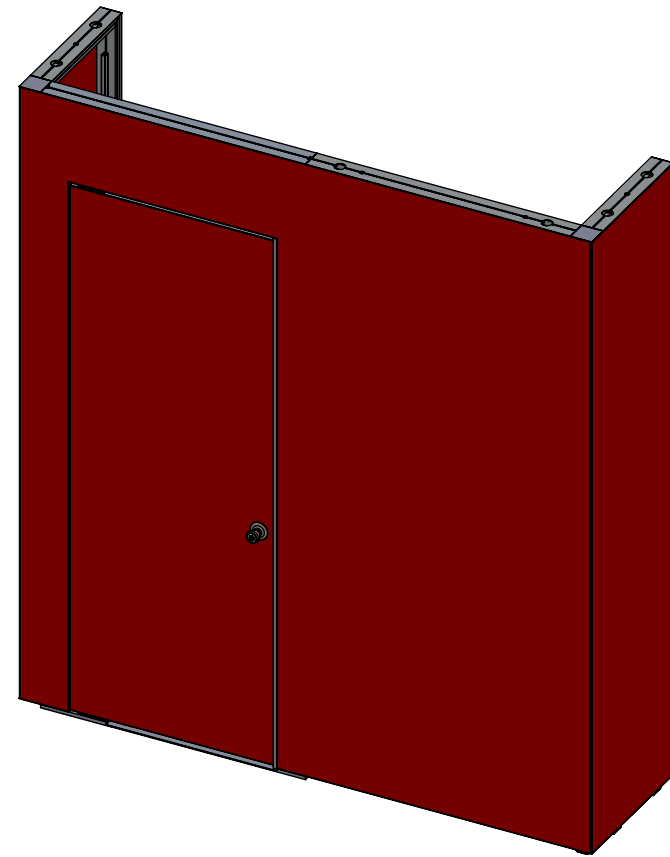
WARNING: Hanging system and structure are designed for:
 (1) indoor use only and (2) to hold the weight of the structure and fabric cover only. No other loads should be applied to this display system.



4008095- LH Full Graphic Door



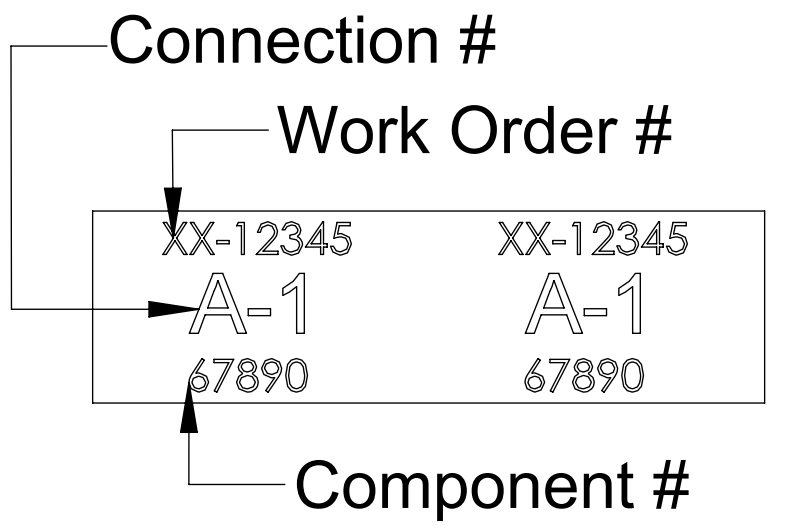
4008096- RH Full Graphic Door



PARTS LIST

ESTIMATED WEIGHT:			
PARTS LIST (PER UNIT):			
QTY REQUIRED:	DESCRIPTION:	QTY PACKED:	BAG/BOX LOCATION:
	4008095 LH Swing Door		
	4008096 RH Swing Door		
	Handle Set		
	ALSO INCLUDED:		
	WRENCH		
	GLOVES		
	WASH CLOTH		
	PLASTIC DROP CLOTH		
			PACKAGED BY:

 **Do Not Mix Component #'s
No "Dumping"**

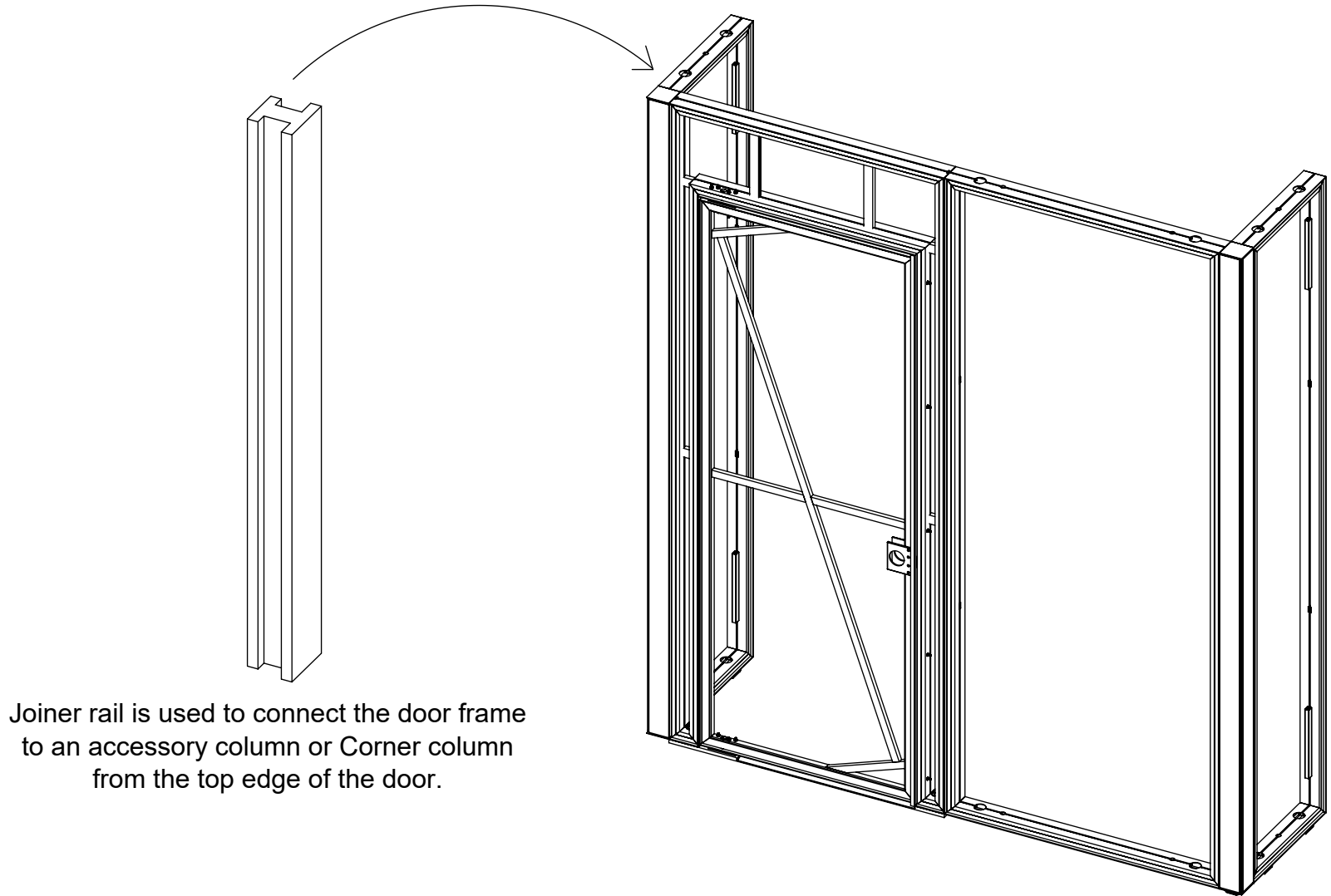


Before You Start:

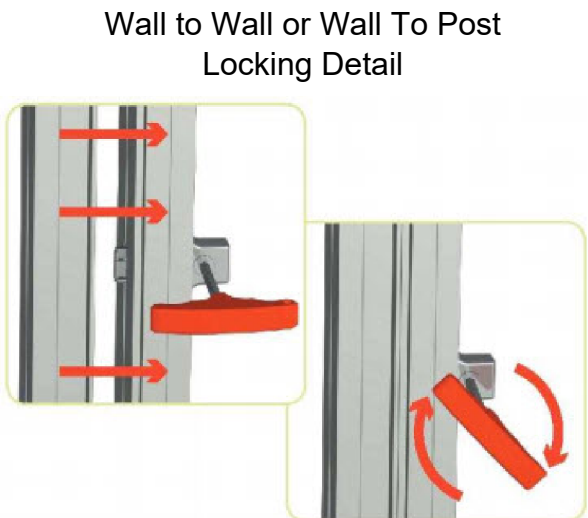
Lay out plastic sheeting, apply gloves to all hands. Unpack all boxes, remove all framing and components according to line item #.

STEP 1 | **Do Not Mix Component #'s**
No "Dumping"

Unpack all aluminum parts. Layout face up on floor according to labels on frame. Arrange the individual EZ wall components as needed. Lock each Wall in place. Lock the door in place and use Joiner rail if needed to connect to a column.



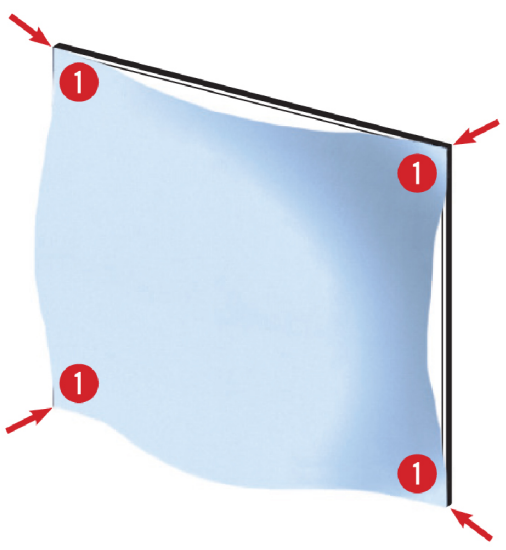
Joiner rail is used to connect the door frame to an accessory column or Corner column from the top edge of the door.



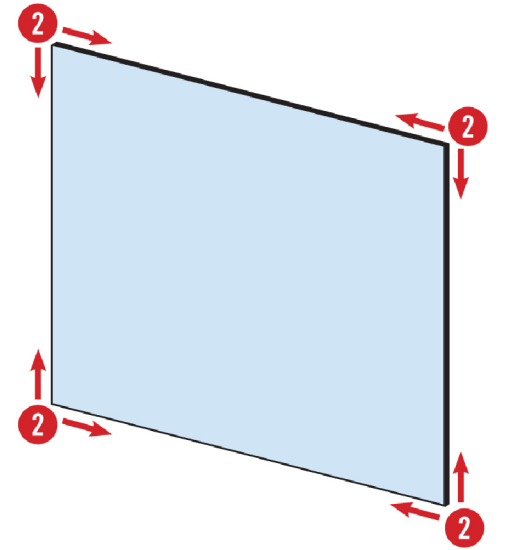
STEP 2

SEG FABRIC GRAPHICS INSTALLATION

1 Insert the gasket into only the corners of the frame.



2 **CRITICAL:** Start from each corner and work towards the center of the frame to evenly distribute the gasket in the frame channel.

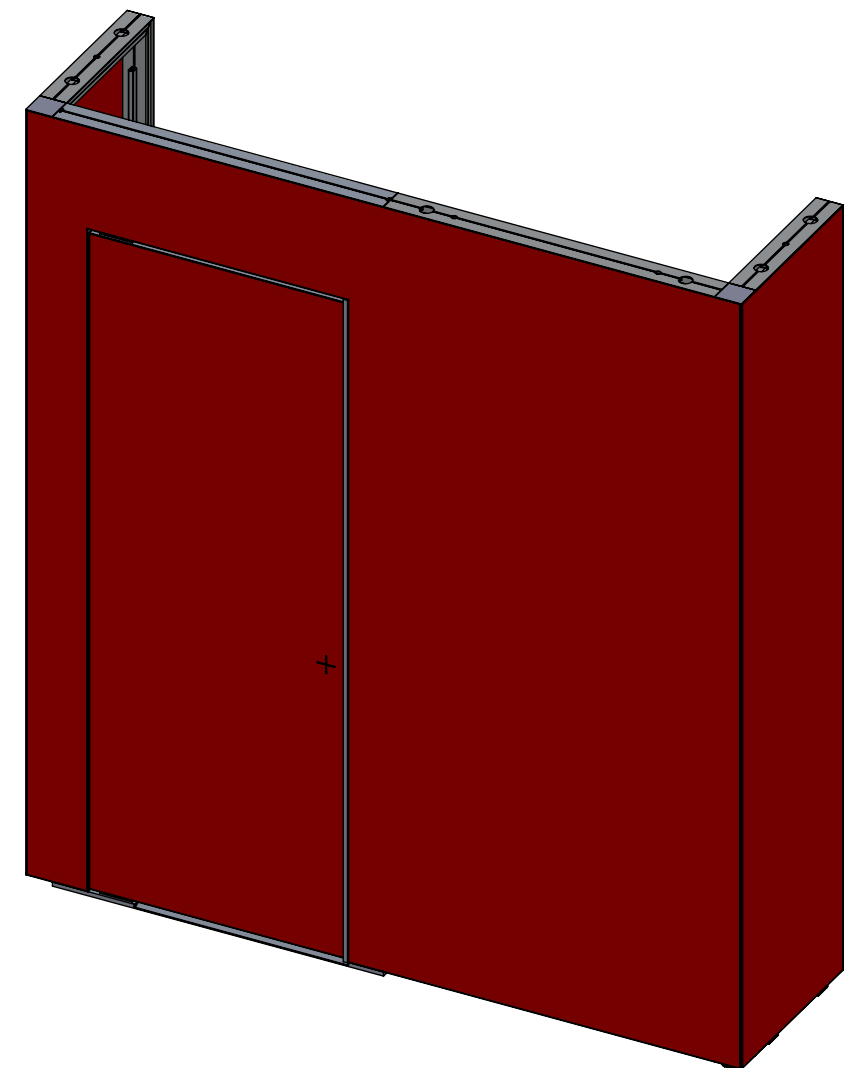
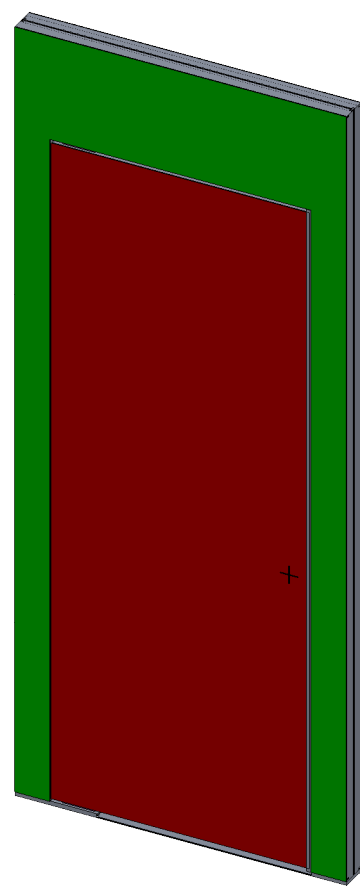


DO NOT start at one corner and work in one direction across the frame as this will stretch the gasket and bunch the fabric.

FABRIC HANDLING

- | Most fabrics can be folded. Loosely fold with image facing inward.
- | Follow general fabric care guidelines included with this shipment.
- | Store graphics in original shipping packaging.
- | Do not crush.

Wipe down frame. Lay down supplied plastic drop cloth. Put on supplied gloves. Carefully unpack fabric covers and lay face down on clean plastic drop cloth. Locate the fabric(s) and verify orientation. See fabric installation details to the left for best fit. If needed, hand steam to remove small wrinkles or creases. Door can have 2 individual fabrics, one for the surround and one for the door. Or it can used with a multi wall fabric. see below.

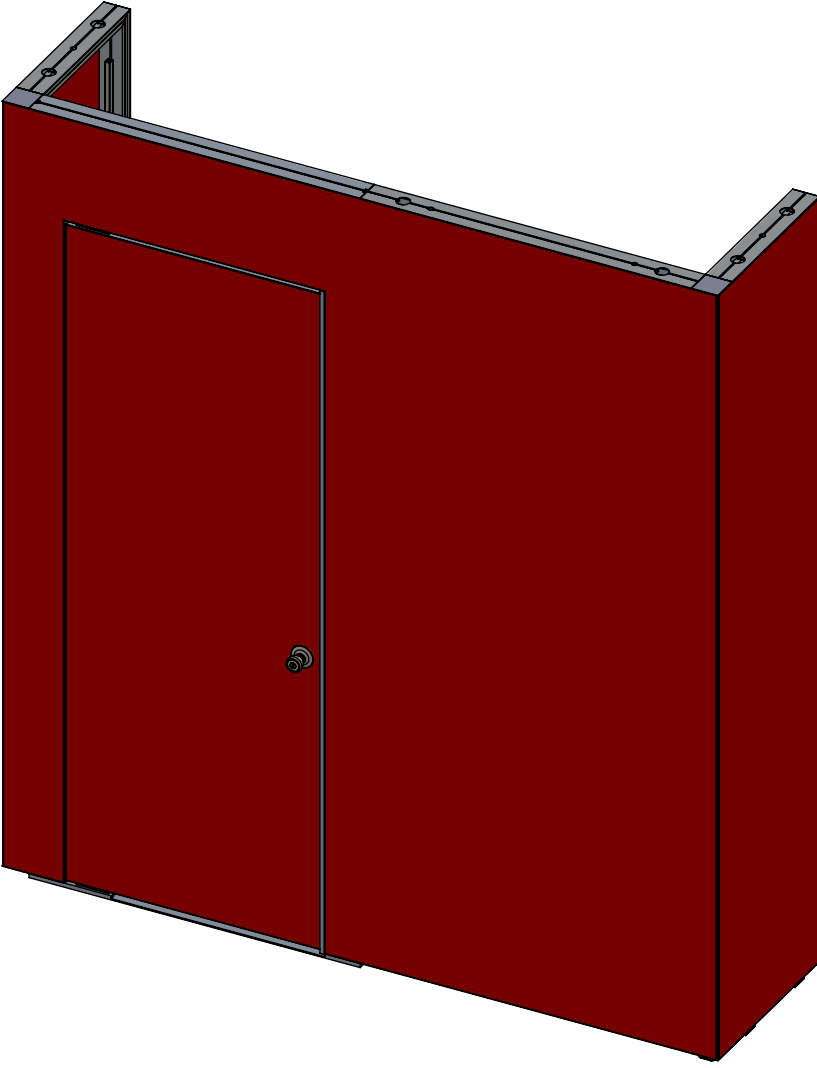
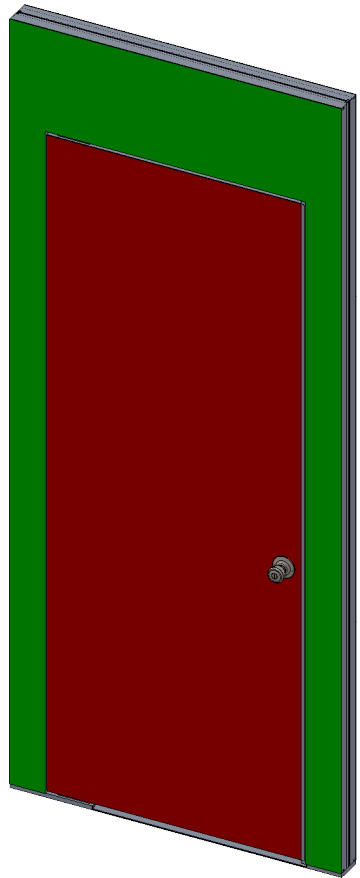


GLOVES



STEP 3

See the Full Graphic Door Handle Set manual to install the handle as shown.



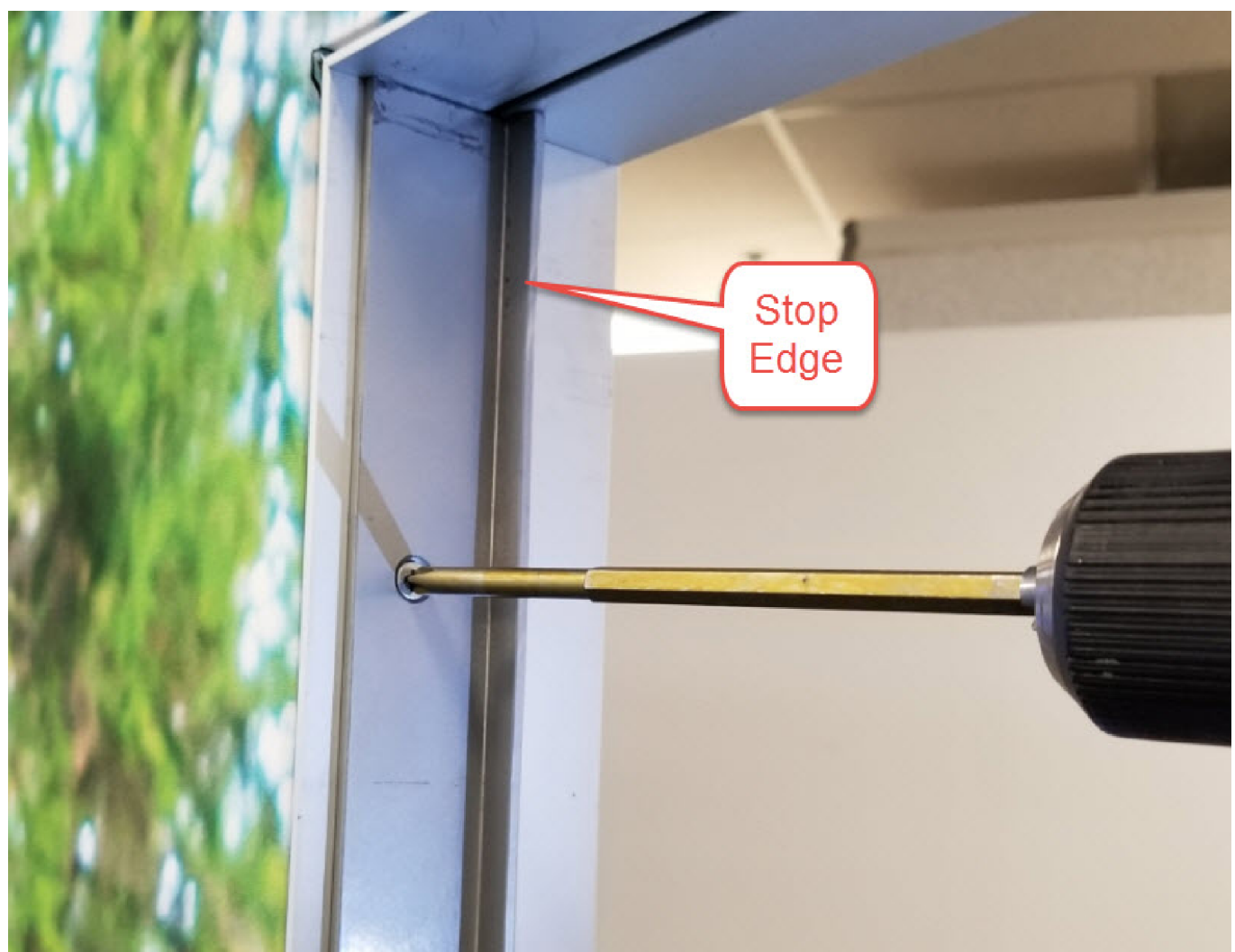
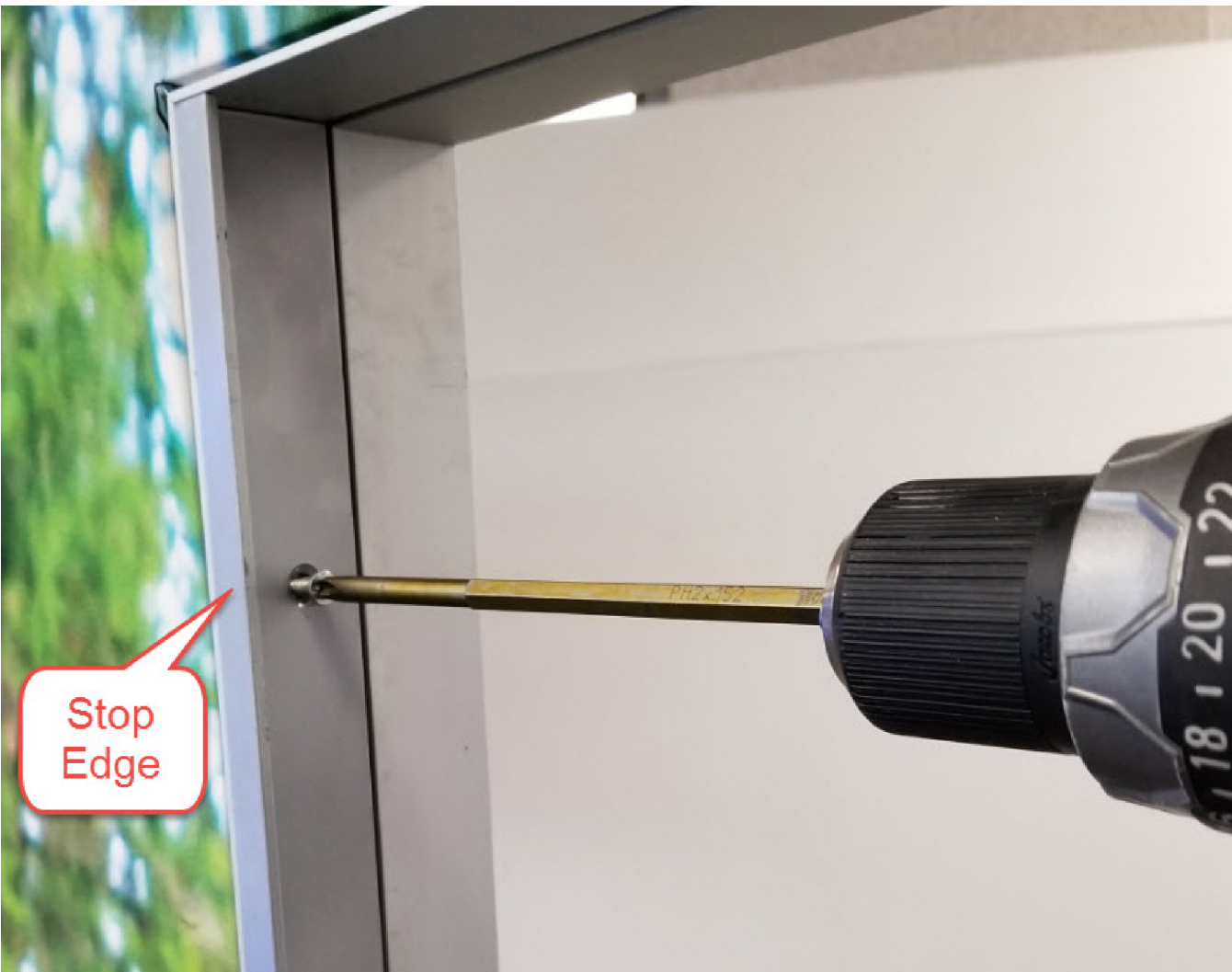
STEP 4

To change to an Swing-Out door:

Unscrew the Door Stop by removing all (5) screws.



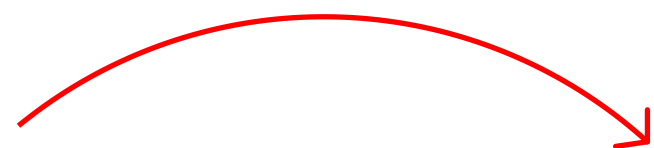
Rotate 180 degrees and reinstall all (5) screws.



STEP 5

To change to an Swing-Out door: Reference separate setup instructions for handle assembly/disassembly set as shown.

Uninstall the Handle Latch.



Reverse, and reinstall.

