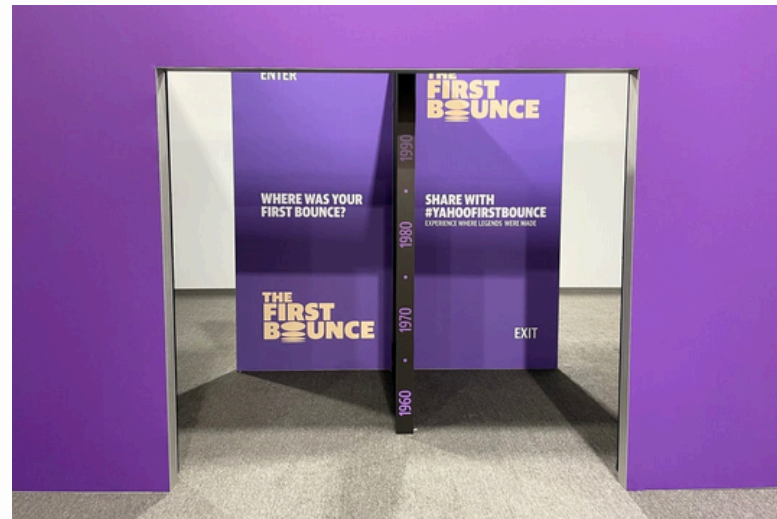


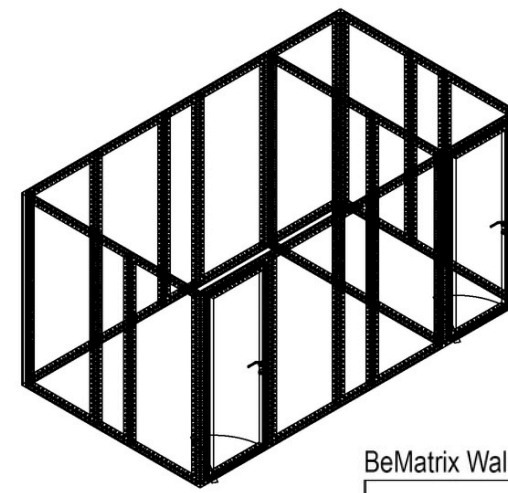
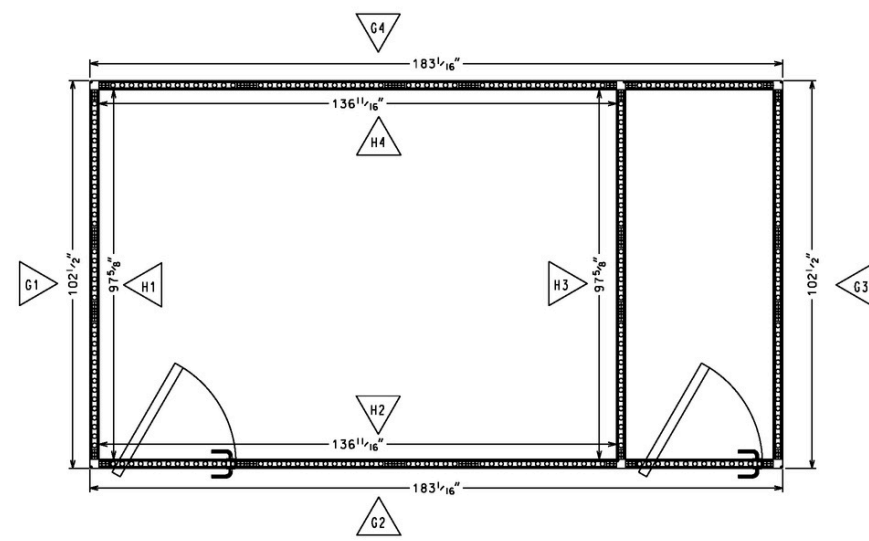
SEG Drawing Guidelines for Modular Frame Systems Requiring Gasket Breaks



This page helps streamline pre-production for SEG Graphics for modular frame systems requiring gasket breaks. It ensures accurate fabric dimensions based on the Bill of Materials (BOM) for each elevation, helping to achieve a precise fit and finish.

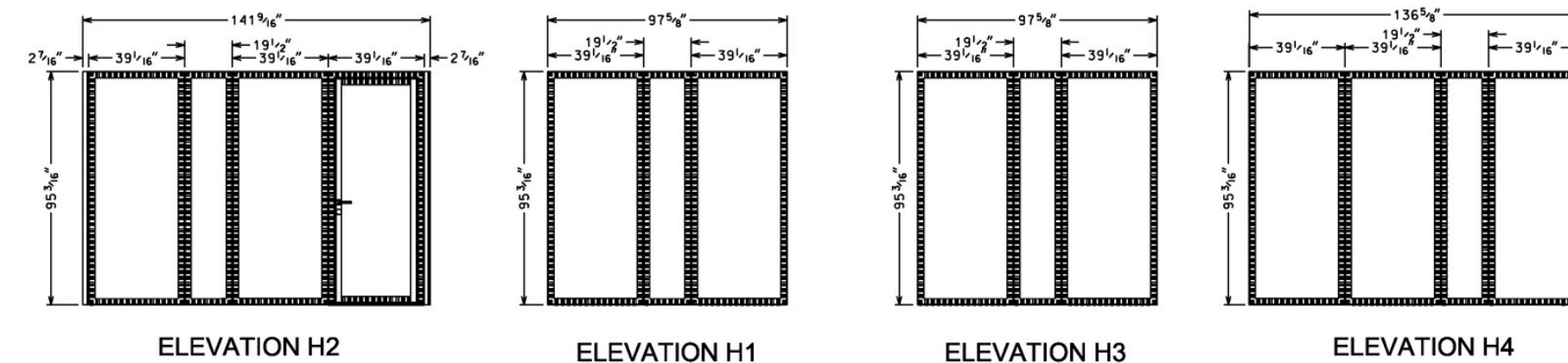
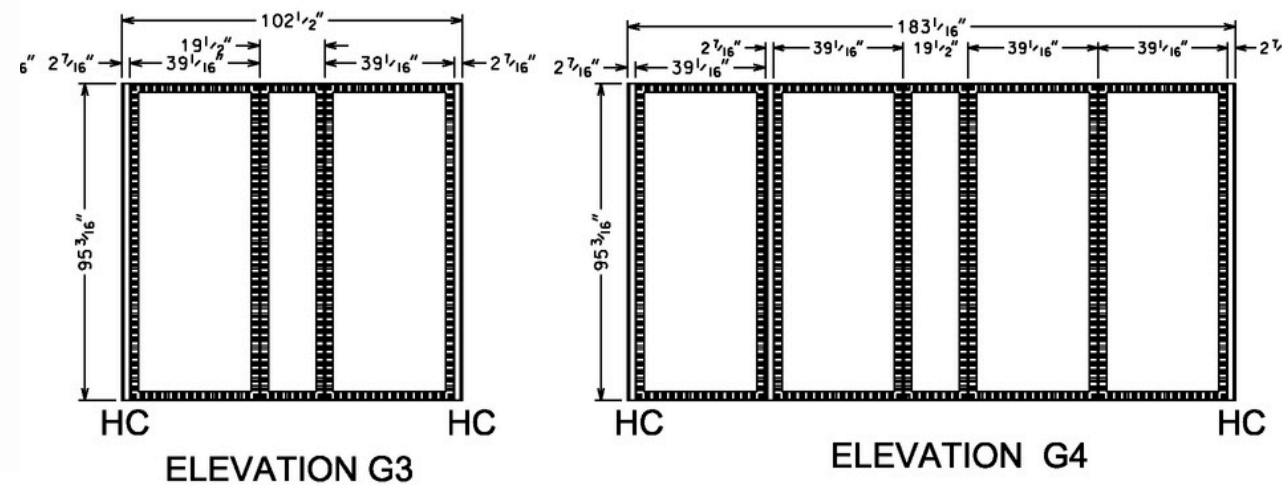
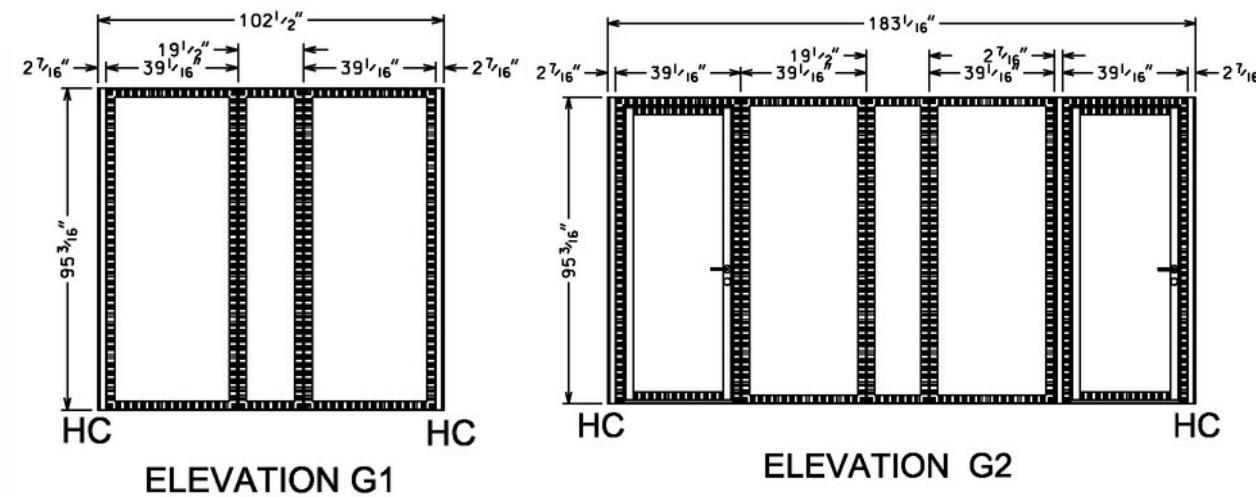
Drawings for SEG multiwalls should be submitted to Moss via your customer portal.

CUSTOMER PORTAL



BeMatrix Wall Systems

BOM		
COUNT	DESCRIPTION	DIMENSIONS
12	0992 x 2418 mm Frame	39.06" x 95.20"
5	0496 x 2418 mm Frame	19.53" x 95.20"
2	0992 x 2418 mm Door Frame	39.06" x 95.20"
6	2418 mm H 90 SEG Corner Post	95.20" Corner Post



GUIDELINES

An elevation should be shown for each wall receiving an SEG fabric.

These elevations should show the frames that make that wall, include the dimensions for each frame and the overall fabric dimensions from outside edge to outside edge.

Label each elevation and have the corresponding label marker shown in the plan view of the structure.

Callout if a hidden corner post (HC) is being used.

Include a BOM with all the walls, posts and QTY of each.

Include a callout of the frame system being used. example (Moss EZ Wall, BeMatrix, Aluvision, etc.)

Please do not send CAD files unless you need Moss to cross-check your CAD to your PDF for accuracy. This request may incur a surcharge and increased lead-time.

Moss considers the primary viewing face to be the outside face of the structure by default unless otherwise noted.